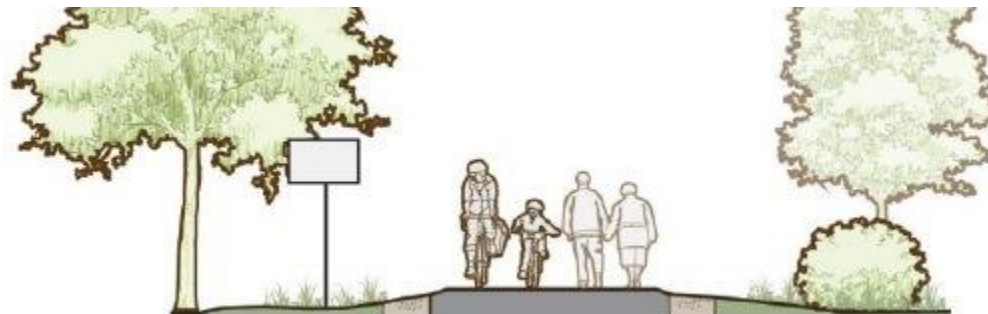
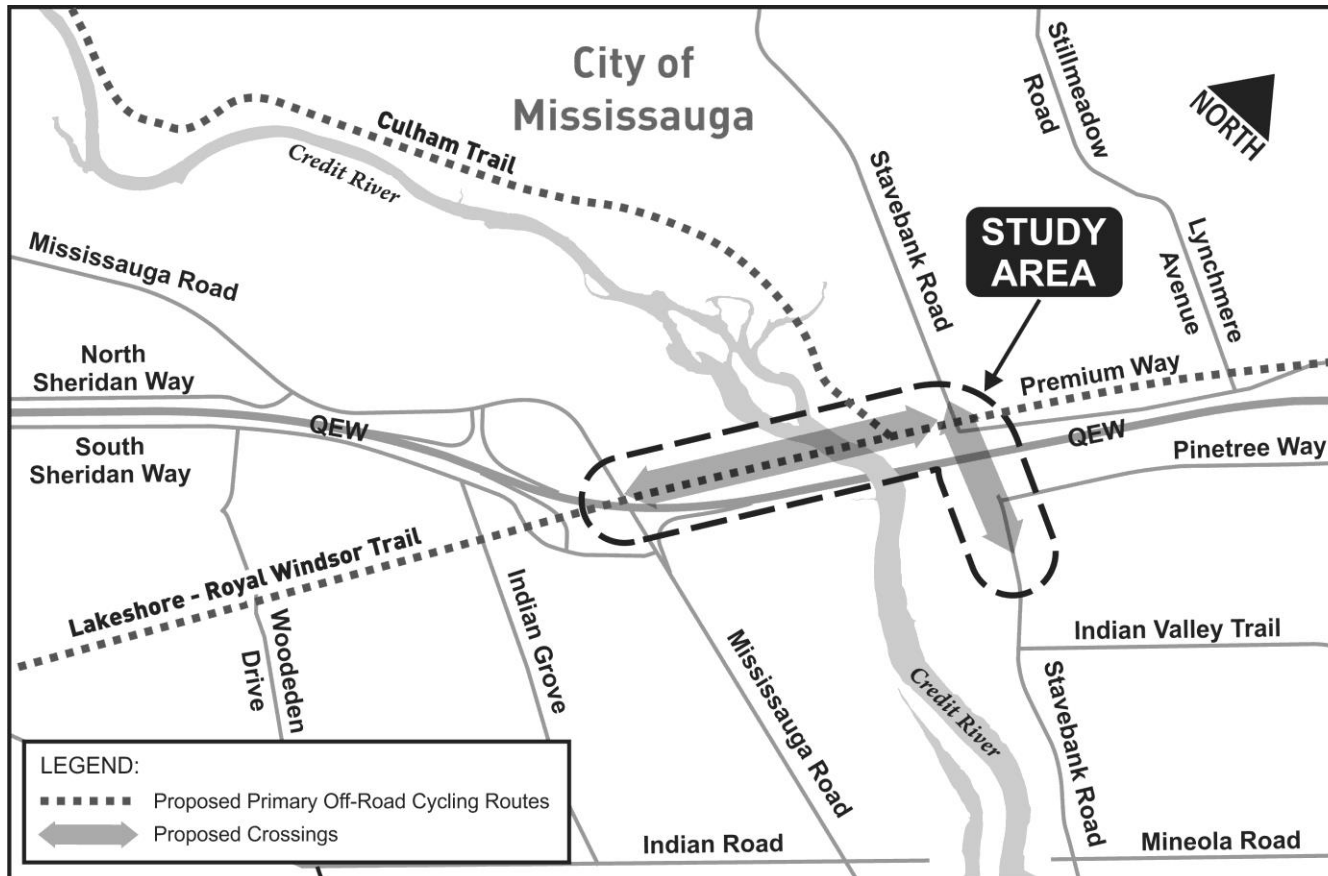




# CREDIT RIVER ACTIVE TRANSPORTATION CROSSINGS

ITE EDMONTON 2018

JUNE 5, 2018







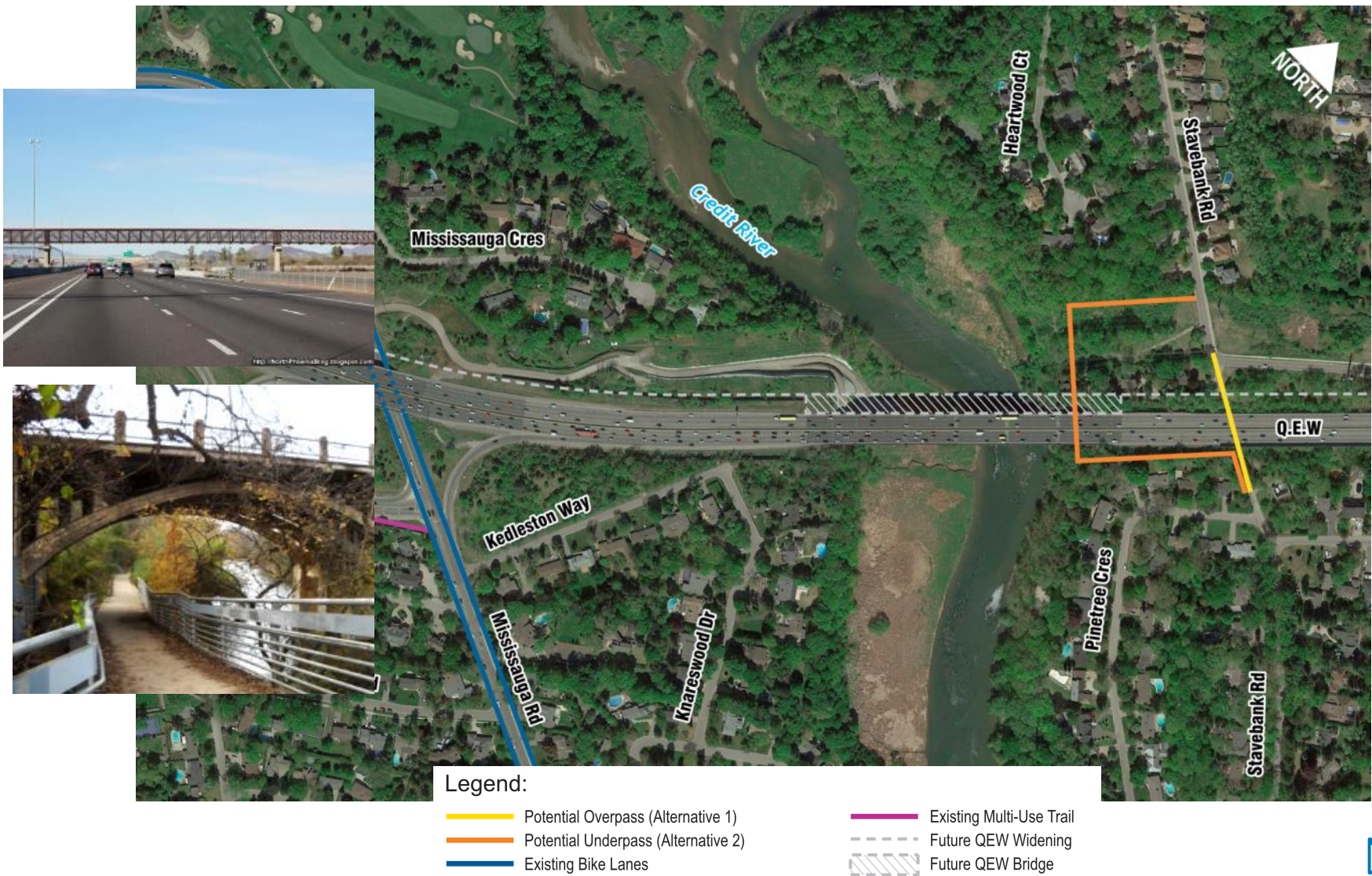






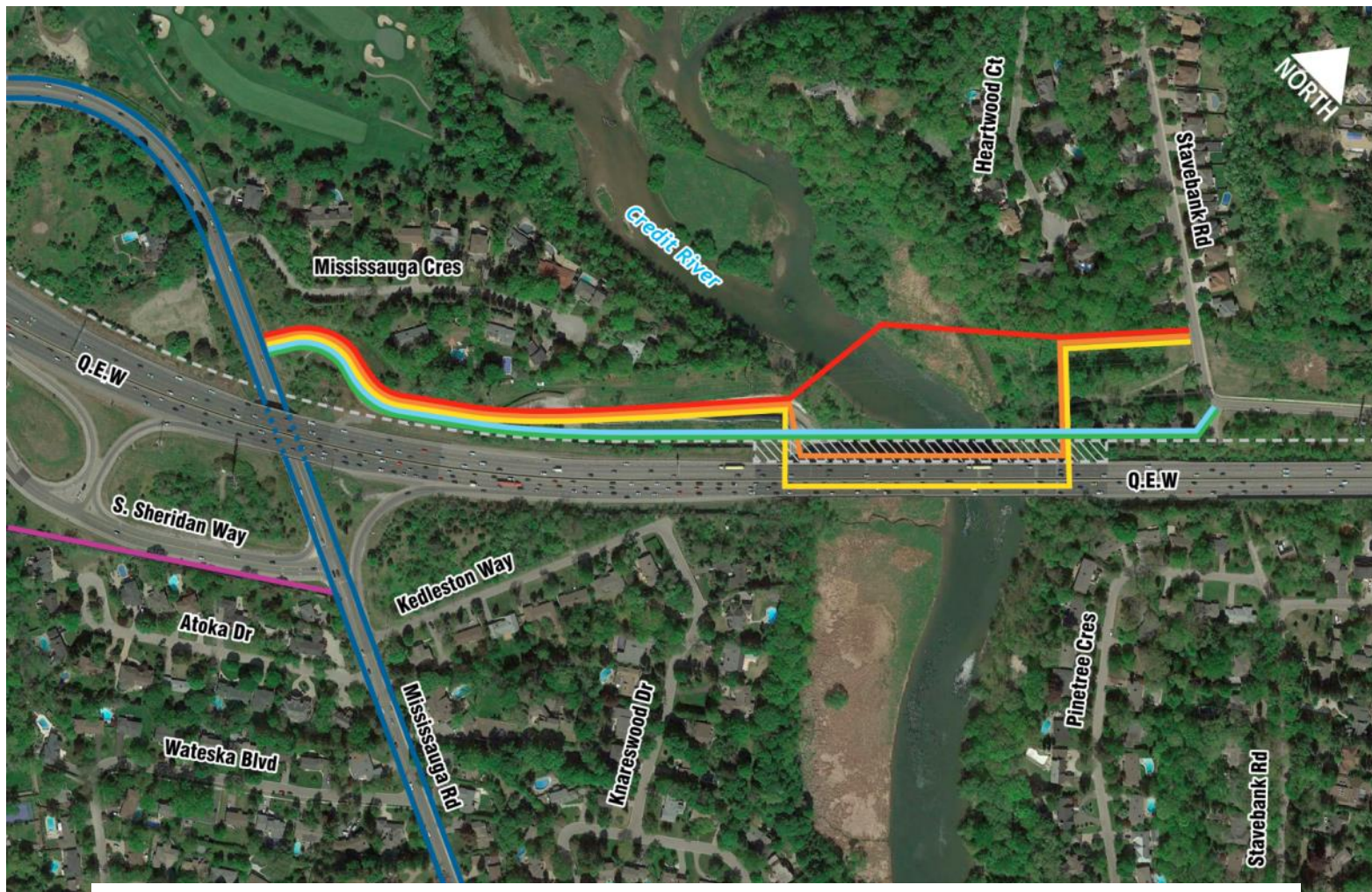






- Legend:**
- Potential Overpass (Alternative 1)
  - Potential Underpass (Alternative 2)
  - Existing Bike Lanes
  - Existing Multi-Use Trail
  - Future QEW Widening
  - Future QEW Bridge





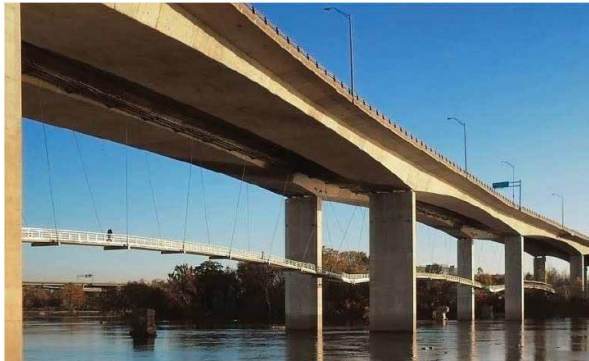
Legend:

- Crossing Attached to Future QEW Bridge At Grade (Alternative 1)
- Crossing Attached to Future QEW Bridge Below Grade (Alternative 2)
- Crossing Between Piers of Future QEW Bridge (Alternative 3)

- Crossing on New Bridge North of QEW (Alternative 4)
- Crossing Below Existing QEW Bridge (Alternative 5)
- Existing Bike Lanes

- Existing Multi-Use Trail
- Future QEW Widening
- ▨ Future QEW Bridge



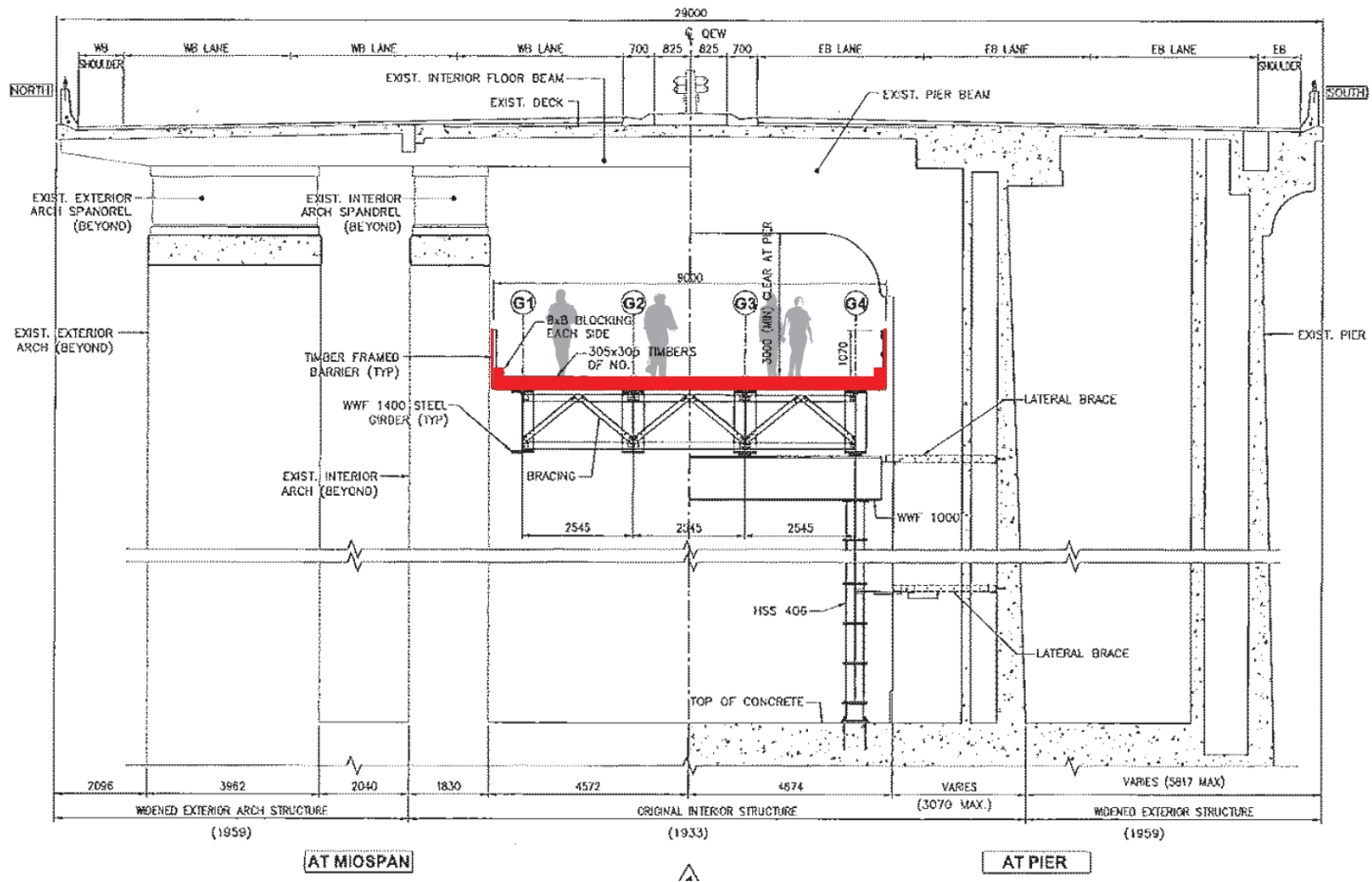






















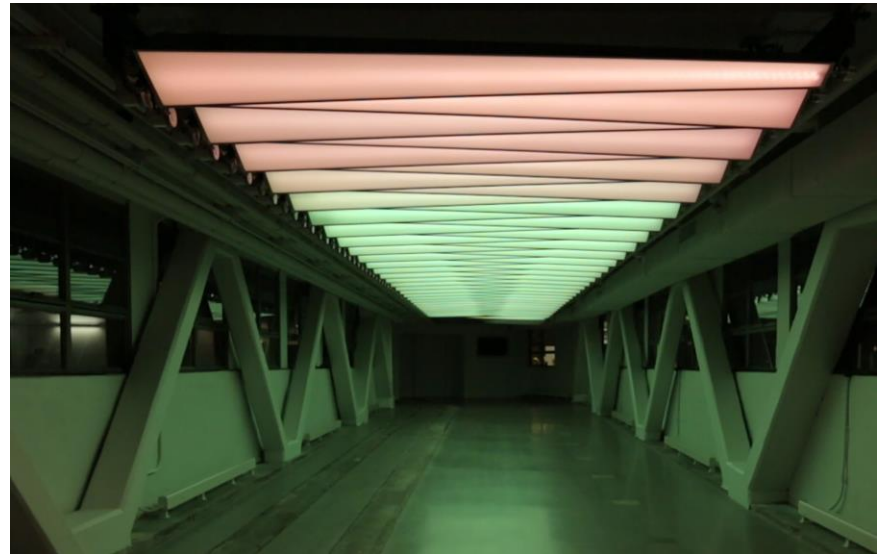




2











# Ontario

Region of Peel  
*Working for you*



MISSISSAUGA







# Photo Credits

- Morrison Hershfield
- Montgomery Sisam
- WSP Global Inc.
- Landezine - Society for Promotion of Landscape Architecture – Sam Noonan
- Syska Hennessy Group - Harbour Drive Pedestrian Bridge, San Diego, CA
- Architectural Digest, Prismatic\_NYC, a light installation in the Chelsea neighborhood